



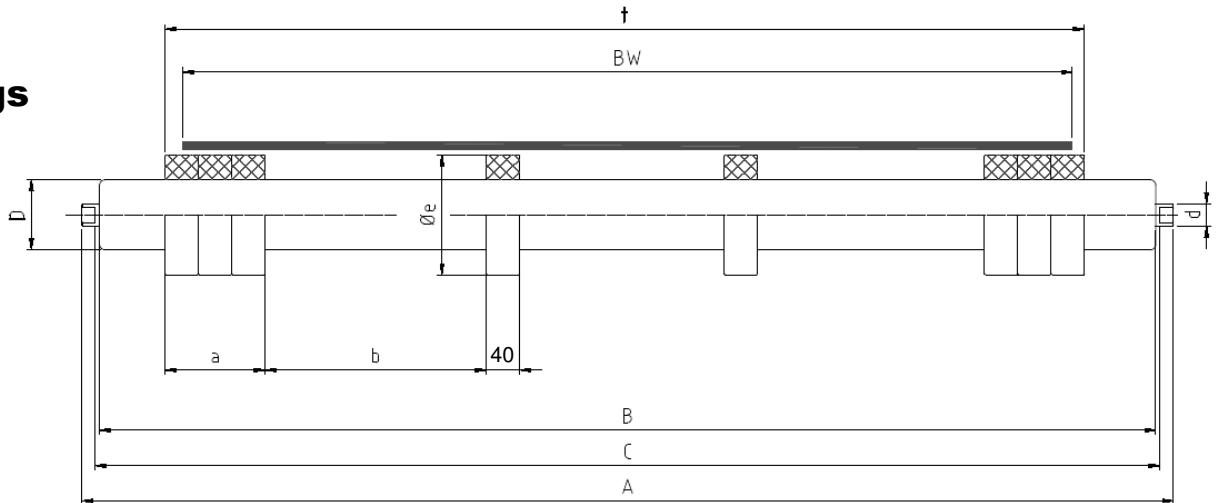
Return rollers with rubber rings, shape DIN 15210 Type B

Possible Rubber options, to be specified in the order:

- SBR std. rubber.
- NBR anti-oil, anti-resin rubber, resistant to aggression of wood resins and oils, and resistant to medium abrasion materials.
- EPDM anti-acid rubber, resistant to aggression of acids.
- or other special rubber under request.

2 Rollers

series
with rings



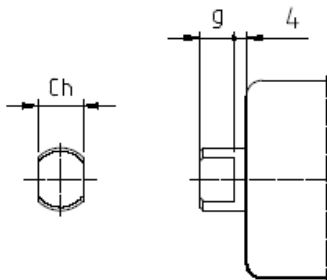
Ø 63/108
Ø 89/133

BW	B	C	a	b	t	side pack ring N.	central ring N.	total ring N.	Weight Kg			
									PSV1 63/108	PSV1 89/133	PSV2 89/133	PSV4 89/133
500	600	608	80	160	520	2	1	5	6.4	8.4		
650	750	758	80	143	670	2	2	6	7.6	10	11.6	
800	950	958	120	170	820	3	2	8	9.6	12.2	14.1	16.3
1000	1150	1158	120	168	1030	3	3	9	11.3	14.6	16.8	19.3
1200	1400	1408	160	152	1240	4	4	12	13.2	17.3	19.6	22.6
1400	1600	1608	160	153	1440	4	5	13	15.3	19.3	22	25.3
1600	1800	1808	200	143	1640	5	6	16		21.4	24.4	28.1

A dimension according to shaft execution F or Y (see table below)

Standard shaft exec. F

Option shaft exec. Y



Roller type	d	Ch	D	Øe	Std. shaft exec. F	Opt. shaft exec. Y
					g	g
PSV1	20	14	63	108	9	9
PSV1	20	14	89	133	9	9
PSV2	25	18	89	133	12	12
PSV4	30	22	89	133	12	12

